

# P3



**Oil Pattern Distance:** 39 Feet      **Reverse Brush Drop:** 39 Feet      **Oil Per Board:** 50 uL  
**Forward Oil Total:** 13.2 mL      **Reverse Oil Total:** 7.15 mL      **Volume Oil Total:** 20.35 mL  
**Forward Boards Crossed:** 264 Boards      **Reverse Boards Crossed:** 143 Boards      **Total Boards Crossed:** 407 Boards

	Start	Stop	Loads	Speed	Crossed	Start	End	Feet	T.Oil
1	2L	2R	4	18	148	0.0	7.6	7.6	7400
2	9L	9R	1	18	23	7.6	10.1	2.5	1150
3	10L	10R	2	18	42	10.1	15.2	5.1	2100
4	11L	11R	1	18	19	15.2	17.7	2.5	950
5	12L	12R	1	22	17	17.7	20.8	3.1	850
6	13L	13R	1	22	15	20.8	23.9	3.1	750
7	2L	2R	0	22	0	23.9	39.0	15.1	0

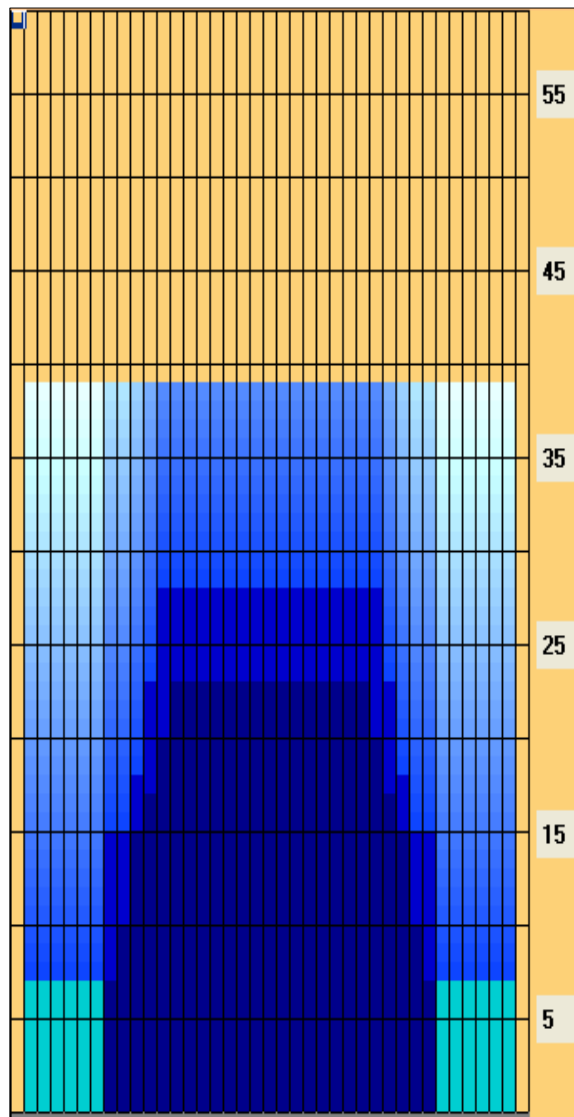
Conditioner:  
 Type In or Select One  
  
 TransferType:  
 Type In or Select One

◀ ▶ ⏪ ⏩ Forward Reverse More

	Start	Stop	Loads	Speed	Crossed	Start	End	Feet	T.Oil
1	2L	2R	0	26	0	39.0	28.0	-11.0	0
2	12L	12R	2	18	34	28.0	22.9	-5.1	1700
3	11L	11R	2	18	38	22.9	17.8	-5.1	1900
4	10L	10R	1	18	21	17.8	15.3	-2.5	1050
5	8L	8R	1	18	25	15.3	12.8	-2.5	1250
6	8L	8R	1	14	25	12.8	10.9	-1.9	1250
7	2L	2R	0	14	0	10.9	0.0	-10.9	0

◀ ▶ ⏪ ⏩ Forward Reverse More

- Forward
- Reverse
- Combined
- Buff



Dieses Oelmuster wurde uploaded von Schlitz #3Im Bahnpflege Maschine am 17.11.2018 08:31

Item	3L-7L:18L-18R	8L-12L:18L-18R	13L-17L:18L-18R	18L-18R:17R-13R	18L-18R:12R-8R	18L-18R:7R-3R
Description	Outside Track:Middle	Middle Track:Middle	Inside Track:Middle	Middle: Inside Track	Middle:Middle Track	Middle:Outside Track
Track Zone Ratio	4.25	1.63	1	1	1.63	4.25

